



Renovation revelation

Dean Marks always had an unquenchable desire to create something unusual to live in. When he discovered a dilapidated 18th century church he realised he had met his calling.

While reusing existing features and restoring others were possible Dean also had a quest to discretely marry the latest technology into the building to make a modern home. This led him to Amina Invisible loudspeakers and the “miraculous” way they become invisible.

“When I came across the Amina loudspeakers I thought they were amazing,” Dean explains. “A totally invisible loudspeaker! I just knew I wanted them.” Dean decided on 16 pairs of Aminas throughout the main rooms. Although an accomplished builder, he was doing all the work himself, he was apprehensive about the install.

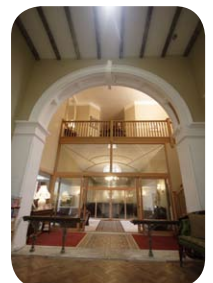
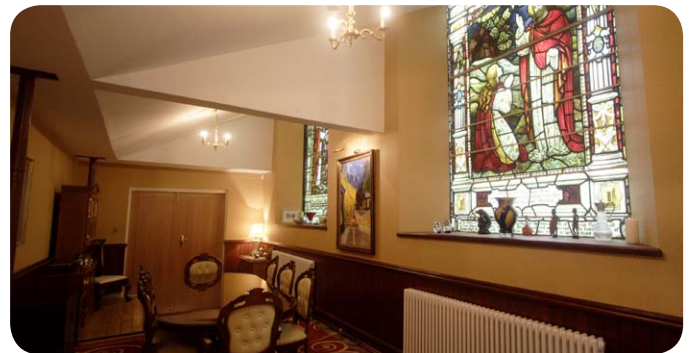
“Looking back it was quite an easy job. We offered up the speakers to the plasterboard, scribed around and cut out the stencil of the loudspeaker to leave a hole. We then screwed in the lugs supplied with the speakers.

Then we used some joint tape around the speakers so that it overlapped with the plasterboard and covered the join. A plaster skim layer later and they were done. Now we’ve decorated it’s impossible to tell where they are. All you can hear is the music.”

Amina loudspeakers are different. They produce sound by creating vibrations in their speaker panel. This is similar to the way natural acoustic instruments such as violins and guitars work. Find out more at www.amina.co.uk.

Dean has also fitted Amina loudspeakers into the traditionally wet environments of his house: bathrooms, kitchens and swimming pool. Here the plaster layer protects them and he doesn’t worry about moisture or cleaning them!

The result at St Martins is an amazing family home boasting 6 bedrooms equipped with the latest AV sympathetically incorporated into the iconic features of this historic building.



amina[®]
TECHNOLOGIES LTD

Distribuidor em Portugal

SISLITE Lda

Rua Sá de Figueiredo 6 C
2790-233 Carnaxide, Portugal

tel +351 21 417 76 21 fax +351 030 00 31
email geral.sislite@sislite.pt web www.sislite.pt

“Dean Marks always had an unquenchable desire to create something unusual to live in. And when he discovered a dilapidated 18th century church he realised he had met his calling.”